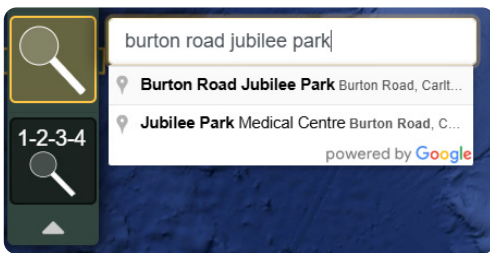


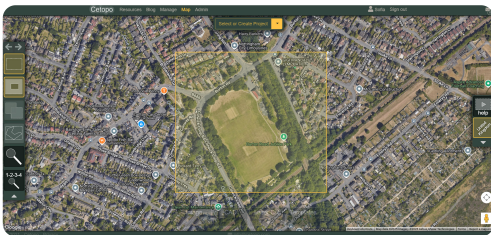
A Guide to Creating a Project

A project is a user-defined area saved on the platform, shown as a yellow rectangle on the map. A project remains active for 12 months from its creation date.



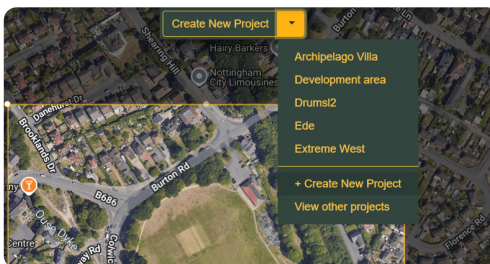
Step One: Locate your site

- Use the search bar to locate your site by address or coordinates.



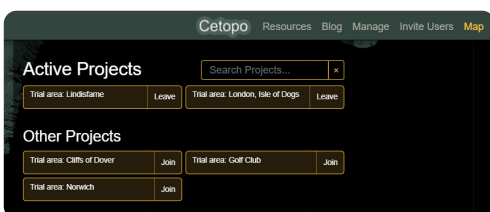
Step Two: Select the desired area

- Use the rectangle tool to specify the area for your project.
- Adjust the selection as needed to include all necessary parts of the site.



Step Three: Create or select your project

- Once the area is selected, click the 'Create or Select Project' button at the top center of the map view.
- From the dropdown menu, choose 'Create New Project'.
- Enter a unique name for your project and confirm.



Step Four: Access and manage projects

- Your active projects will appear in the left-hand side menu under 'Active Projects' when you log in.
- Expired projects will also be listed there.
- To renew an expired project, simply click 'Renew' next to the project name.