

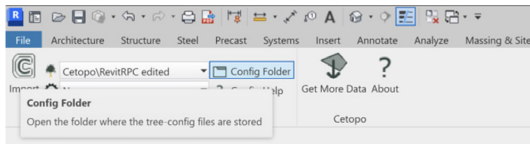


A Guide to Tree Configuration for Enscape

With Cetopo, all imported 3D data is seamlessly brought into Revit as native components of your choice, ready for immediate editing and integration within. Using a config file you can import trees from Cetopo directly into Revit as native RPC families or as Enscape Asset Families.

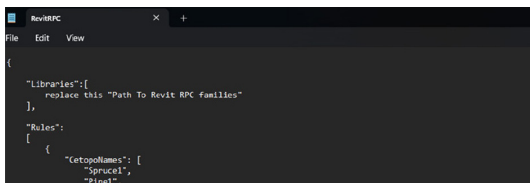
A configuration file is like a set of instructions for a computer program or software. It tells the program how to behave or what settings to use. It's a bit like a recipe for baking a cake – it lists the ingredients and steps to follow. So, when a program reads a configuration file, it knows how to work correctly, just like a baker follows a recipe to make a delicious cake.

The configuration file format is .JSON. design workflow.



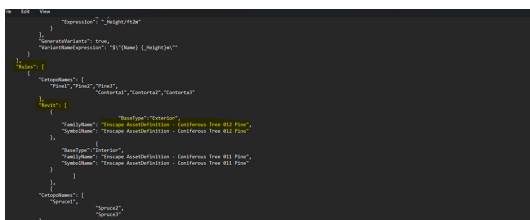
Step One: Locate configuration files

Click and open the 'Config Folder' to open the folder containing the configuration (.JSON) files



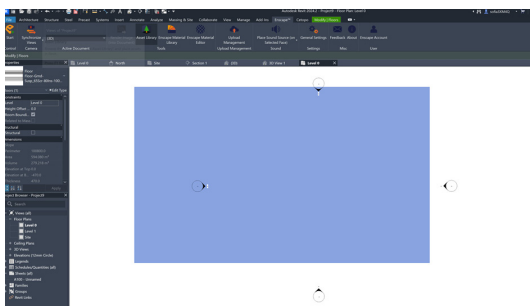
Step Two: Open the config file in a text editor

Select the Enscape configuration file and open it using Notepad, Visual Studio Code or other text editor.



Step Three: Locate names of enscape assets

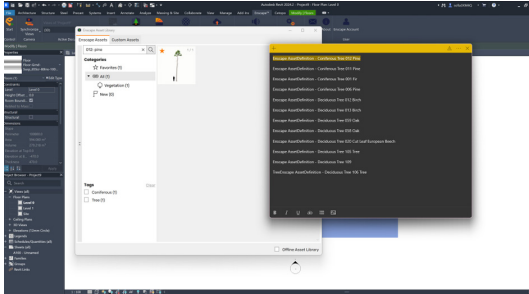
Jump to the 'rules' section of the config file. This is where the Enscape assets replacing the Cetopo trees are specified. Save all 12 of the 'Family Names' somewhere convenient for you.



Step Four: Retrieve the Enscape assets via Revit

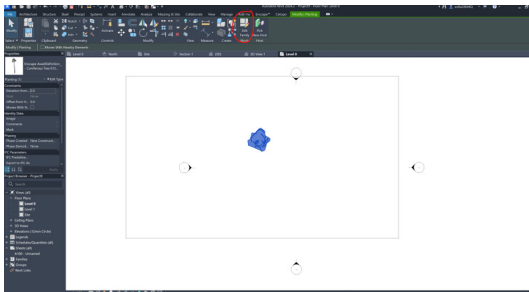
The Enscape assets need to be downloaded and saved. To do this, start by **opening a new project in Revit**. In the new project file, **create a surface** (for example, a floor), as we will use the **"Place Asset on Surface"** function. Then, open the Asset Library from the Enscape plug-in in Revit.

A Guide to Tree Configuration for Enscape



Step Four: Retrieve the Enscape assets via Revit

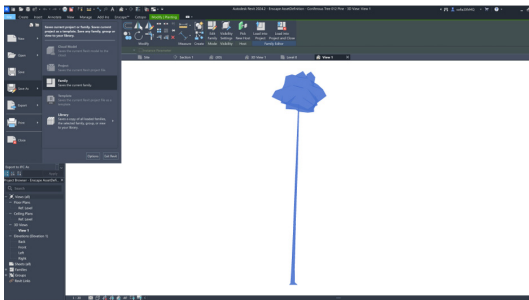
Use the list of 12 Enscape asset names you saved in the previous step to quickly search for each asset and add it to your favorites in the **Enscape Asset Library**. Then, one by one, select an asset by clicking on it and choose **"Place Asset on Surface"**. Next, select your surface in Revit and place the asset onto it.



Once the Enscape asset is placed on the surface in Revit, select the Enscape asset and click on **'Edit Family'** in the **'Modify'** tab at the top ribbon in Revit.

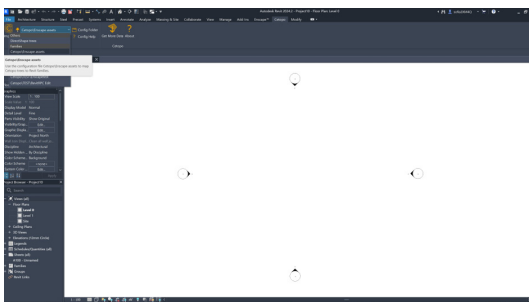
Step Five: Save the Enscape assets in your folder

Once the family is opened, save it to your folder by selecting **File → Save As → Family**. Be sure to save the new family with exactly the same name as it appears in the .JSON file, and in the exact folder specified in the file path within the .JSON file.



Step Six: Open your Cetopo model using Enscape assets

Launch a new project in Revit and navigate to the Cetopo plug in. Select the correct configuration file by clicking the drop-down menu represented by a tree icon, located to the right of the Import button, and choose your configuration file.



In the dialogue window that appears after selecting your file to import, navigate to the location where you have saved your Enscape assets and select them.

Then, import your Cetopo model - it's now ready for Enscape visualizations!